

Industrial all stainless steel case gauges

Model 4008

According ASME B40.1/EN 837-1

Nominal size 40 mm, 50 mm, 63 mm and 100 mm

Features

- Rugged construction
- Protection IP54 and IP65
- Overload protection 130 %
- Dry or liquid filled

Ranges

-1 ... 0 bar up to 0 ... 600 bar

-30 in. Hg ... 0 psi up to 0 ... 10.000 psi

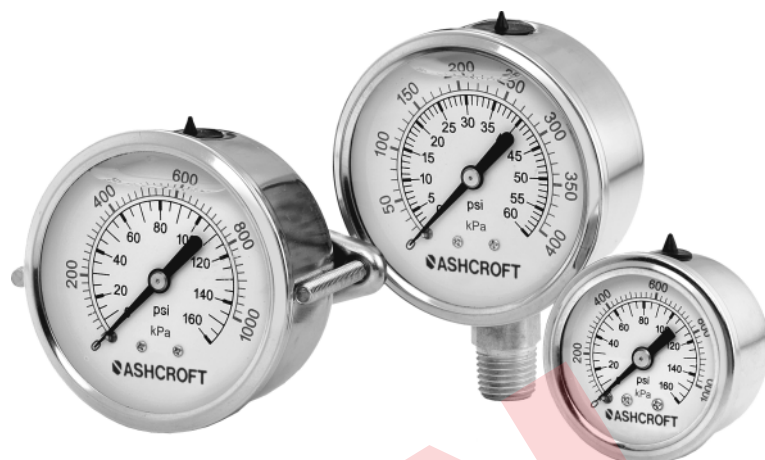
Applications

Chemical and petrochemical industry

Machine and apparatus construction

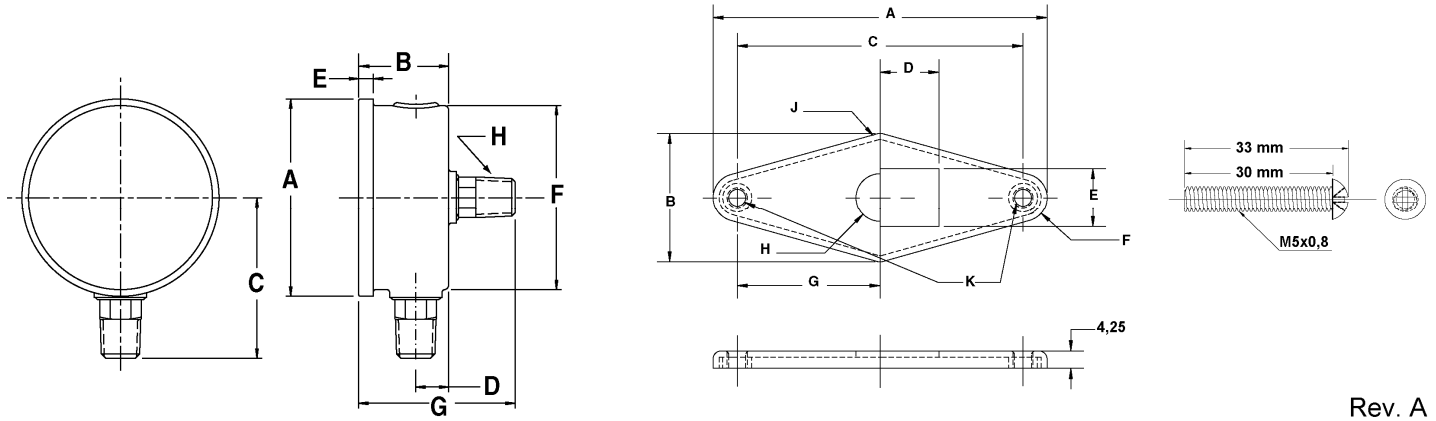
Food and beverage industry

Pulp and paper industry



Technical specification	4008=B				4008=S										
	40	50	63	100	40	50	63								
Dial size in mm	40	50	63	100	40	50	63								
Construction	Open front with crimped ring														
Measuring principle	Bourdon tube with conventional movement														
Range in bar	1	1,6	2,5	4	6	10	16	25	40	60	100	160	250	400	600
Overpressure limit	130 % F.S., short time														
Pressure type	Gauge, vacuum and compound														
Process connection	1/8 NPT male, G 1/8 B male	1/8 NPT male, G 1/8 B male, 1/4 NPT male, G 1/4 B male	1/4 NPT male, G 1/4 B male, 1/2 NPT male, G 1/2 B male	1/2 NPT male, G 1/2 B male	1/2 NPT male, G 1/2 B male	3/8 NPT male, G 3/8 B male 1/4 NPT male, G 1/4 B male	3/8 NPT male, G 3/8 B male 1/4 NPT male, G 1/4 B male								
Connection location	Back	Lower, back		Lower	Back	Lower, back									
Material	Brass Bronze Stainless steel 304 (1.4301)				Stainless steel 316 (1.4401) Stainless steel 316 (1.4401)										
Pressure connection	Brass				Stainless steel 316 (1.4401)										
Tube	Bronze				Stainless steel 316 (1.4401)										
Case/ring	Stainless steel 304 (1.4301)				Stainless steel 316 (1.4401)										
Window	Acrylic, optional instrument glass														
Dial	Aluminum, black markings on white background														
Pointer	Aluminum, black														
Movement	Brass				Stainless steel										
Accuracy	Grade B (3-2-3 %), optionally Grade A (2-1-2 %) according to ASME B40.1, Class 1,6 or Class 2,5 according to EN 837-1														
Permissible	-25 ... 60 °C														
Ambient temperature	-25 ... 60 °C														
Medium temperature	Max. 100 °C														
Storage temperature	-40 ... 65 °C														
effect	Max. 0,3 % / 10 K														
Protection according EN 60 529/IEC 529	IP54 (dry), IP65 (liquid filled), optional IP65 for dry gauges														
Filling liquids	Glycerin or silicone														
Mounting	Stem, optional flush														
Weight dry/filled in kg	0,1/0,15	0,2/0,25	0,25/0,4	0,4/0,6	0,1/0,15	0,2/0,25	0,25/0,4								
Accessories, options	Diaphragm seals, valves														

General dimensions in mm



Rev. A

Dial size	A	B	C	D	E	F		G	H
						lower	back		
40	45	25	-	-	-	-	41	41	1/8"
50	56	28	47	9	5	51		52	1/8"
63	66	29	53	10		62			1/4"
100	109	36	80	12	7	98	-	-	1/4", 1/2"

Dial size	A	B	C	D	E	F	G	H	J	K
40	60	26	48	11,6	11,3	24	24	5	2,5	M5x0,8
50	72	32	60	14,6	14,2	12	30	6		
63	83		71				35,5			

Panel mounting assembly for 40 mm, 50 mm and 63 mm

Order information

Size	System material	Execution	Process connection	Connection orientation	Range	Engineering unit	Filling liquid	Options
(40) 40 mm	(S) 316 (1.4401) tube and socket (not for 100 mm)	(D) Standard dry IP54	(01) 1/8" NPT male ³⁾	(L) Lower	-1/ 0 -1/ 1,5	(BAR)	(=) Standard no filling	(NH) Tagging wired
(50) 50 mm		(L) Liquid filled with Glycerin, IP65, (standard accuracy Grade B)	(02) 1/4" NPT male ¹⁾	(B) Back (not for dial size 100 mm)	-1/ 3 -1/ 5 -1/ 9 -1/ 15		(GR) Glycerin	(ON) Neutral, without logo
(63) 63 mm	(B) Bronze tube and Brass socket		(13) G 1/4" B male ¹⁾		0/ 1 0/ 1,6 0/ 2,5 0/ 4 0/ 6 0/ 10 0/ 16 0/ 25 0/ 40 0/ 60 0/ 100 0/ 160 0/ 250 0/ 400 0/ 600		(GV) Silicone	(UC) U-clamp (only back connection, not for dial size 100 mm)
(100) 100 mm (not for system S)			(04) 1/2" NPT male ²⁾		(15) G 1/2" B male ²⁾		(76) G 1/8" B male ³⁾ (with spigot)	(LJ) Field fillable, IP65
			(77) G 1/8" B male ³⁾ (without spigot)					(CS) Dual scale
			¹⁾ not for dial size 40 mm					(GRA) Accuracy grade A
			²⁾ only for dial size 100 mm					(GRC) Accuracy Class 1,6
			³⁾ not for dial size 100 mm					(GRB) Accuracy Class 2,5
								(FF) Front flange (only for dial size 63 mm)

Order example

Size	Type	System material	Execution	Process connection	Connection orientation	Range	Engineering unit	Filling liquid	Options
63	4008	B	D	02	L	0/16	BAR	=	GRA

Ashcroft Instruments GmbH

Germany
Max-Planck-Str. 1, D-52499 Baesweiler
P.O. Box 11 20, D-52490 Baesweiler
Tel.: +49 (0) 2401 808-0, Fax: +49 (0) 2401 808-125

France
„206“ ZA du Mandinet, 1/3 Rue des Campanules
F-77185 Lognes
Tel.: +33 (0) 1 60 37 25 30, Fax: +33 (0) 1 60 37 25 39

Website: www.ashcroft.eu

e-Mail: sales@ashcroft.com

United Kingdom
Unit 5 William James House
Cowley Road, Cambridge CB4 0WX
Tel.: +44 (0) 12 23 39 55 00, Fax: +44 (0) 12 23 39 55 01