



---

# EX-EQUIPMENT

---



A Phoenix Mecano Company

## ROSE Systemtechnik GmbH

The company was founded in 1969 and specializes in the development and production of high quality industrial enclosures, which are used in a variety of environmental conditions.

Phoenix Mecano AG / Switzerland is a global company.

The basis of our business success are systems from a wide range of high quality products, innovative design and first class customer service.

For more informations please visit our Websites

[www.rose-pw.de](http://www.rose-pw.de)

[www.rose-ex-enclosures.com](http://www.rose-ex-enclosures.com)



A Phoenix Mecano Company

ROSE Systemtechnik GmbH

Erbeweg 13-15

32457 Porta Westfalica

Fon +49 (571) 50 41 0

Fax +49 (571) 50 41 6

E-Mail [rose@rose-pw.de](mailto:rose@rose-pw.de)

Web [www.rose-pw.de](http://www.rose-pw.de)



# Contents

## Stainless steel Ex enclosures

Empty enclosures, Terminal enclosures Ex e and Ex ia

Page 10 - 11



## Stainless steel Ex flange enclosures

Empty enclosures with flange plates, Terminal enclosures Ex e and Ex ia

Page 12 - 13



## Stainless steel Ex cabinets

Empty enclosures, Terminal enclosures with hinged lid Ex e and Ex ia

Page 14 - 15



## Polyester Ex enclosures

Empty enclosures, Terminal enclosures Ex e and Ex ia

Page 16 - 17



## Polyester Ex flange enclosures

Empty enclosures, Terminal enclosures Ex e and Ex ia

Page 18 - 19



## Polyester Ex Okta Box

Empty enclosures, Terminal enclosures Ex e and Ex ia

Page 20 - 21



## Polyester Ex cabinets

Empty enclosures, Terminal enclosures Ex e and Ex ia

Page 22 - 23



## Aluminium Ex enclosures

Empty enclosures, Terminal enclosures Ex e and Ex ia

Page 24 - 25



## Beluga Ex Handheld enclosures

Empty enclosures, Terminal enclosures Ex e and Ex ia

Page 26 - 27



## Flameproof enclosures

Aluminium- and Stainless steel enclosures, Ex-d II 2B and Ex-d II 2C

Page 28 - 35



## Ex Control Station

Ex operating stations in individual version

Page 36 - 37



## Ex Polyester Empty enclosures for mining

Empty enclosures, Terminal enclosures Ex e and Ex ia

Page 38 - 39



## Ex Control Equipment

Push-buttons, switches, etc.

Page 40 - 48



## Ex Installation material

Cable glands, blind plug etc.

Page 49 - 52



## Technical addition

Terminal fitting, heat tables

Page 53 - 143



# ROSE Ex Enclosures



# Efficient Protection



## Stainless steel enclosures

- top quality for highest requirements
- more than 40 different versions
- available in standard, flange and hinged versions

## Polyester enclosures

- sturdy construction for outdoor and indoor use
- standard and flange versions
- more than 50 different sizes and variations



## Aluminium enclosures

- more than 40 different sizes

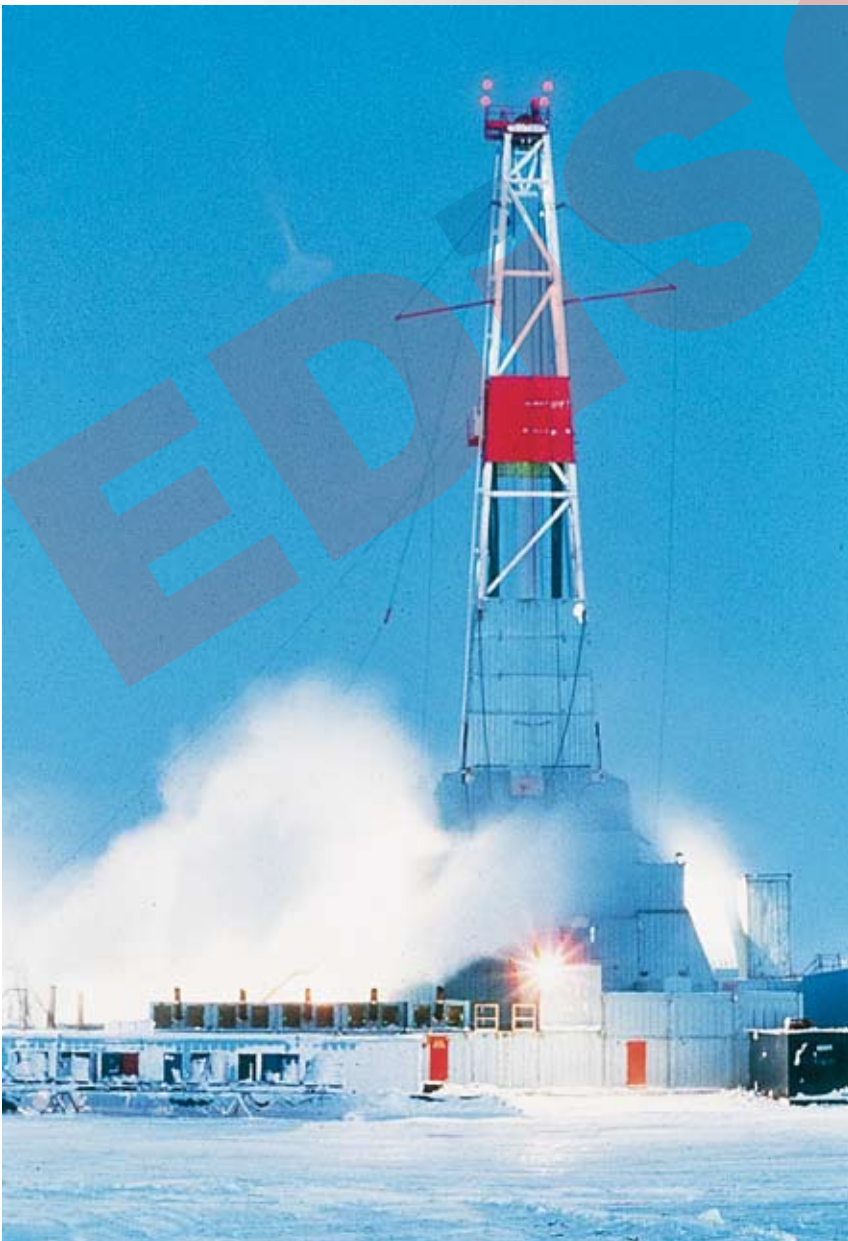


# ROSE Ex Enclosures

## Extreme climatic conditions, aggressive environment?

ROSE Ex enclosures have fulfilled the most versatile demands worldwide for years.

For more than 20 years, ROSE Ex enclosures made in stainless steel, polyester and aluminium have proved reliable Ex appliances and are being used by renowned plant contractors all over the world.



Operating under arctic conditions up to temperatures of  $-55^{\circ}\text{C}$

# ROSE Ex Enclosures

Aggressive chemical environment



Operating under tropical conditions  
up to temperatures +90°C



# ROSE Ex Enclosure



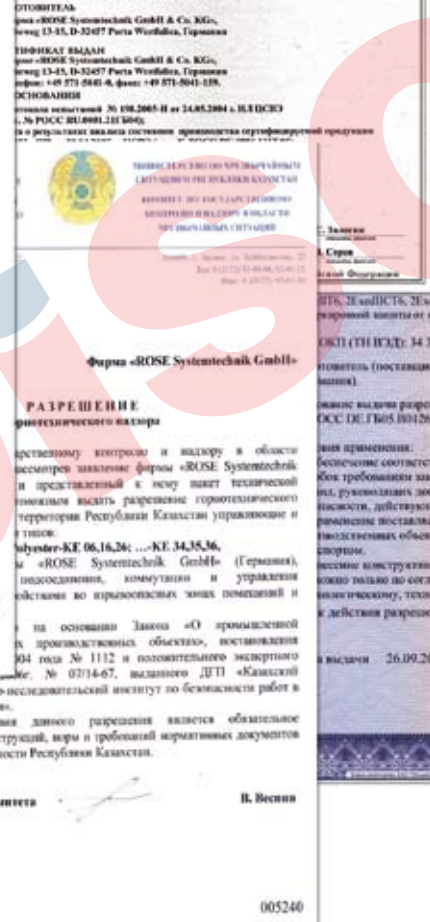
PTB



GOST  
Russia



GOST  
Kazakhstan



ROSE Ex enclosures are in accordance to the European ATEX standards and worldwide IECEx guidelines:

EN/IEC 60079-0, EN/IEC 60079-7 and EN/IEC 60079-11.

Application area:

- Ex e (increased safety) and
- Ex ia (intrinsic safety)

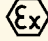


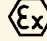
# ROSE Ex Enclosures and Control Stations



Ex terminal enclosure with ATEX and IECEX certification  
- fully assembled with terminals, cable glands,  
continuity plates etc.

Area of application: Increased and intrinsic safety  
for sensitive measuring signals

 Ex e

 Ex ia

Ex-d Enclosure

 Ex-d



Control stations with switches, push buttons and  
lamp units

# Stainless Steel Ex Enclosures



- High-quality enclosure systems for aggressive areas according ATEX and IEC-directives
- Empty enclosures for individual fittings and Ex e / Ex i terminal enclosures
- Optional version with window
- temperature classes T6 / T5 / T4

## Technical Data

### Approvals

IECEX, ATEX, Gost R, Gost K, INMETRO

### Explosion protection

⊕ II 2 G

⊕ II 2 D

Ex e II T6 (increased safety)

Ex ia IIC T6 (intrinsic safety)

Ex e(ia) IIC T6 (mixed fitting)

### Certificates

IECEX PTB 07.0059U, PTB 00 ATEX 1101U, Gost R, INMETRO MC AEX-8298-U

IECEX PTB 07.0060, PTB 00 ATEX 1052, INMETRO MC AEX-8504-X, Gost R

### Material

Stainless Steel 1.25 mm or 1.5 mm 1.4404 / 316L

### Temperature range

-20°C to +40°C (acc. T6 = 85°C max. on surface temperature)

-20°C to +55°C (acc. T5 = 100°C max. on surface temperature)

-20°C to +90°C (acc. T4 = 135°C max. on surface temperature)

to -55°C with special marking on request

### Surface

grinded, grain 240

### Ingress protection

IP 66 to EN 60529

### Impact resistance

7 Joule to EN 60079-0

# Stainless Steel Ex Enclosures

## Product overview

Type			
Ex e	Ex ia	empty enclosures	dimensions (H x W x D) mm
35.10 10 06	36.10 10 06	34.10 10 06	100 x 100 x 61
35.15 10 06	36.15 10 06	34.15 10 06	100 x 150 x 61
35.20 10 06	36.20 10 06	34.20 10 06	100 x 200 x 61
35.15 15 08	36.15 15 08	34.15 15 08	150 x 150 x 81
35.30 15 08	36.30 15 08	34.30 15 08	150 x 300 x 81
35.40 15 08	36.40 15 08	34.40 15 08	150 x 400 x 81
35.20 20 08	36.20 20 08	34.20 20 08	200 x 200 x 81
35.20 20 12	36.20 20 12	34.20 20 12	200 x 200 x 121
35.30 20 08	36.30 20 08	34.30 20 08	200 x 300 x 81
35.30 20 12	36.30 20 12	34.30 20 12	200 x 300 x 121
35.40 20 12	36.40 20 12	34.40 20 12	200 x 400 x 121
35.60 20 12	36.60 20 12	34.60 20 12	200 x 600 x 121
35.30 30 12	36.30 30 12	34.30 30 12	300 x 300 x 121
35.30 30 16	36.30 30 16	34.30 30 16	300 x 300 x 161
35.40 30 16	36.40 30 16	34.40 30 16	300 x 400 x 161
35.50 30 16	36.50 30 16	34.50 30 16	300 x 500 x 161
35.38 38 16	36.38 38 16	34.38 38 16	380 x 380 x 161
35.50 40 16	36.50 40 16	34.50 40 16	400 x 500 x 161
35.99 99 99	36.99 99 99	34.99 99 99	on request

# Stainless Steel Ex Flange Enclosures



- High-quality enclosure systems for aggressive areas according ATEX and IEC-directives
- Empty enclosures for individual fittings and Ex e / Ex i terminal enclosures
- Easy entrance to interior by large flange opening area; 1 to 4 flange openings
- temperature classes T6 / T5 / T4

## Technical Data

### Approvals

IECEX, ATEX, Gost R, Gost K, INMETRO

### Explosion protection

Ⓜ II 2 G

Ⓜ II 2 D

Ex e II T6 (increased safety)

Ex ia IIC T6 (intrinsic safety)

Ex e(ia) IIC T6 (mixed fitting)

### Certificates

IECEX PTB 07.0059U, PTB 00 ATEX 1101U, Gost R, INMETRO MC AEX-8298-U

IECEX PTB 07.0060, PTB 00 ATEX 1052, Gost R, INMETRO MC AEX-8504-X

### Temperature range

-20°C to +40°C (acc. T6 = 85°C max. on surface temperature)

-20°C to +55°C (acc. T5 = 100°C max. on surface temperature)

-20°C to +90°C (acc. T4 = 135°C max. on surface temperature)

to -55°C with special marking on request

### Material

Stainless Steel 1.5 mm, 1.4404/316L, flange plate: 3.0 mm, 1.4404/316L

### Surface

grinded, grain 240

### Ingress protection

IP 66 to EN 60529

### Impact resistance

7 Joule to EN 60079-0

# Stainless Steel Ex Flange Enclosures

## Product overview

Type				
Ex e	Ex ia	empty enclosures	N°. of flanges	dimensions (H x W x D) mm
<b>35.03 33 01</b>	<b>36.03 33 01</b>	<b>34.03 33 01</b>	1	306 x 306 x 217
<b>35.03 43 01</b>	<b>36.03 43 01</b>	<b>34.03 43 01</b>	1	382 x 458 x 217
<b>35.03 75 04</b>	<b>36.03 75 04</b>	<b>34.03 75 04</b>	4	508 x 762 x 217
<b>35.03 86 04*</b>	<b>36.03 86 04*</b>	<b>34.03 86 04*</b>	4	640 x 860 x 217
<b>35.03 97 04*</b>	<b>36.03 97 04*</b>	<b>34.03 97 04*</b>	4	740 x 980 x 217
<b>35.03 99 99</b>	<b>36.03 99 99</b>	<b>34.03 99 99</b>		on request

\* on request



# Stainless Steel Ex Cabinets



- High-quality enclosure systems for aggressive areas according ATEX and IEC-directives
- Empty enclosures for individual fittings and Ex e / Ex i terminal enclosures
- With covered hinges and double ward locks
- temperature classes T6 / T5 / T4

## Technical Data

### Approvals

IECEX, ATEX, Gost R, Gost K, INMETRO

### Explosion protection

⊕ II 2 G

⊕ II 2 D

Ex e II T6 (increased safety)

Ex ia IIC T6 (intrinsic safety)

Ex e(ia) IIC T6 (mixed fitting)

### Certificates

IECEX PTB 07.0059U, PTB 00 ATEX 1101U, Gost R, INMETRO MC AEX-8298-U

IECEX PTB 07.0060, PTB 00 ATEX 1052, Gost R, INMETRO MC AEX-8504-X

### Material

Stainless steel 1.25 mm or 1.5 mm, 14301/304, 1.4404/316L on request

### Surface

grinded, grain 240

### Ingress protection

IP 66 to EN 60529

### Impact resistance

7 Joule to EN 60079-0

### Temperature range

-20°C to +40°C (acc. T6 = 85°C max. on surface temperature)

-20°C to +55°C (acc. T5 = 100°C max. on surface temperature)

-20°C to +90°C (acc. T4 = 135°C max. on surface temperature)

to -55°C with special marking on request

# Stainless Steel Ex Cabinets

## Product overview

Type			
Ex e	Ex ia	empty enclosures	dimensions (H x W x D) mm
35.00 22 09	36.00 22 09	34.00 22 09	250 x 200 x 97
35.00 22 15	36.00 22 15	34.00 22 15	250 x 200 x 157
35.00 32 09	36.00 32 09	34.00 32 09	250 x 350 x 97
35.00 33 16	36.00 33 16	34.00 33 16	300 x 300 x 167
35.00 53 16	36.00 53 16	34.00 53 16	300 x 500 x 167
35.00 63 16	36.00 63 16	34.00 63 16	300 x 600 x 167
35.00 44 16	36.00 44 16	34.00 44 16	380 x 380 x 167
35.00 44 21	36.00 44 21	34.00 44 21	380 x 380 x 217
35.00 64 21	36.00 64 21	34.00 64 21	380 x 600 x 217
35.00 99 99	36.00 99 99	34.00 99 99	on request

# Polyester Ex Enclosures



- glass fibre reinforced enclosure systems of polyester-resin for use in all Ex-areas
- Empty enclosures for individual fittings and Ex e / Ex i terminal enclosures
- Optional version with window
- temperature classes T6 / T5 / T4

## Technical Data

### Approvals

IECEX, ATEX, Gost R, Gost K, INMETRO

### Explosion protection

Ⓜ II 2 G

Ⓜ II 2 D

Ex e II T6 (increased safety)

Ex ia IIC T6 (intrinsic safety)

Ex e(ia) IIC T6 (mixed fitting)

### Certificates

IECEX PTB 08.0003U, PTB 01 ATEX 1061U, Gost R, INMETRO MC AEX-8296-U

IECEX PTB 08.0004, PTB 00 ATEX 1002, Gost R, INMETRO MC AEX-8503-X

### Temperature range

-20°C to +40°C (acc. T6 = 85°C max. on surface temperature)

-20°C to +55°C (acc. T5 = 100°C max. on surface temperature)

-20°C to +90°C (acc. T4 = 135°C max. on surface temperature)

to -55°C with special marking on request

### Material

glass fibre reinforced duroplastic polyester, graphite added

### Colour

RAL 9011, graphite black

### Ingress protection

IP 66 to EN 60529

### Impact resistance

7 Joule to EN 60079-0

### Flammability

self-extinguishing, UL 94/V0

### Surface resistance

<10<sup>9</sup> Ohm to IEC 60093

### Toxicity

halogen-free



# Polyester Ex Enclosures

## Product overview

Type			
Ex e	Ex ia	empty enclosures	dimensions (H x W x D) mm
06.08 08 06	16.08 08 06	26.08 08 06	75 x 80 x 56
06.08 08 08	16.08 08 08	26.08 08 08	75 x 80 x 75
06.08 11 06	16.08 11 06	26.08 11 06	75 x 110 x 56
06.08 11 08	16.08 11 08	26.08 11 08	75 x 110 x 75
06.08 16 06	16.08 16 06	26.08 16 06	75 x 160 x 56
06.08 16 08	16.08 16 08	26.08 16 08	75 x 160 x 75
06.08 19 06	16.08 19 06	26.08 19 06	75 x 190 x 56
06.08 19 08	16.08 19 08	26.08 19 08	75 x 190 x 75
06.08 23 06	16.08 23 06	26.08 23 06	75 x 230 x 56
06.08 23 08	16.08 23 08	26.08 23 08	75 x 230 x 75
06.12 12 09	16.12 12 09	26.12 12 09	120 x 122 x 91
06.12 22 09	16.12 22 09	26.12 22 09	120 x 220 x 91
06.16 16 09	16.16 16 09	26.16 16 09	160 x 160 x 91
06.16 26 09	16.16 26 09	26.16 26 09	160 x 260 x 91
06.16 36 09	16.16 36 09	26.16 36 09	160 x 360 x 91
06.16 56 09	16.16 56 09	26.16 56 09	160 x 560 x 91
06.25 26 12	16.25 26 12	26.25 26 12	250 x 255 x 121
06.25 26 16	16.25 26 16	26.25 26 16	250 x 255 x 161
06.25 40 12	16.25 40 12	26.25 40 12	250 x 400 x 121
06.25 40 16	16.25 40 16	26.25 40 16	250 x 400 x 161
06.25 60 12	16.25 60 12	26.25 60 12	250 x 600 x 121
06.36 36 09	16.36 36 09	26.36 36 09	360 x 360 x 91
06.41 40 12	16.41 40 12	26.41 40 12	405 x 400 x 121
06.41 40 20	16.41 40 20	26.41 40 20	405 x 400 x 201

# Polyester Ex Flange Enclosures



- Empty enclosures with certification for individual fittings
- terminal enclosures for increased safe guards and intrinsic safety
- Optional combining with other polyester flange enclosures
- Optional: Lid with transparent window
- temperature classes T6 / T5

## Technical Data

### Approvals

IECEX, ATEX, Gost R, Gost K, INMETRO

### Explosion protection

Ex II 2 G

Ex II 2 D

Ex e II T6 (increased safety)

Ex ia IIC T6 (intrinsic safety)

Ex e(ia) IIC T6 (mixed fitting)

### Certificates

IECEX PTB 08.0003U, PTB 01 ATEX 1061U, Gost R, INMETRO MC AEX-8296-U

IECEX PTB 08.0004, PTB 00 ATEX 1002, Gost R, INMETRO MC AEX-8503-X

### Temperature range

-20°C to +40°C (acc. T6 = 85°C max. on surface temperature)

-20°C to +55°C (acc. T5 = 100°C max. on surface temperature)

to -55°C with special marking on request

### Material

glass fibre reinforced duroplastic polyester, graphite added

### Colour

RAL 9011, graphite black

### Ingress protection

IP 66 to EN 60529

### Impact resistance

7 Joule to EN 60079-0

### Flammability

self-extinguishing, UL 94/V0

### Surface resistance

<10<sup>9</sup> Ohm to IEC 60093

### Toxicity

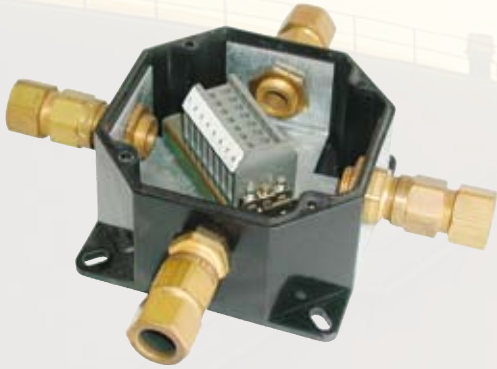
halogen-free

# Polyester Ex Flange Enclosures

## Product overview

Type				
Ex e	Ex ia	empty enclosures	No. of flanges	dimensions (H x W x D) mm
<b>06.14 01 00</b>	<b>16.14 01 00</b>	<b>26.14 01 00</b>	2	170 x 270 x 136
<b>06.14 02 00</b>	<b>16.14 02 00</b>	<b>26.14 02 00</b>	4	270 x 270 x 136
<b>06.14 03 00</b>	<b>16.14 03 00</b>	<b>26.14 03 00</b>	6	270 x 541 x 136

# Polyester Ex Oktabox



- glass fibre reinforced enclosure systems of polyester-resin for use in all Ex-areas
- Empty enclosures for individual fittings and Ex e / Ex i terminal enclosures
- enclosures with external brackets
- temperature classes T6 / T5 / T4

## Technical Data

### Approvals

IECEX, ATEX, Gost R, Gost K, INMETRO

### Explosion protection

⊕ II 2 G

⊕ II 2 D

Ex e II T6 (increased safety)

Ex ia IIC T6 (intrinsic safety)

Ex e(ia) IIC T6 (mixed fitting)

### Certificates

IECEX PTB 08.0003U, PTB 01 ATEX 1061U, Gost R, INMETRO MC AEX-8296-U

IECEX PTB 08.0004, PTB 00 ATEX 1002, Gost R, INMETRO MC AEX-8503-X

### Temperature range

-20°C to +40°C (acc. T6 = 85°C max. on surface temperature)

-20°C to +55°C (acc. T5 = 100°C max. on surface temperature)

-20°C to +90°C (acc. T4 = 135°C max. on surface temperature)

to -55°C with special marking on request

### Material

glass fibre reinforced duroplastic polyester, graphite added

### Colour

RAL 9011, graphite black

### Ingress protection

IP 66 to EN 60529

### Impact resistance

7 Joule to EN 60079-0

### Flammability

self-extinguishing, UL 94/V0

### Surface resistance

<10<sup>9</sup> Ohm to IEC 60093

### Toxicity

halogen-free

# Polyester Ex Oktabox

## Product overview

Type			
Ex e	Ex ia	empty enclosures	dimensions (H x W x D) mm
<b>06.88 01 00</b>	<b>16.88 01 00</b>	<b>26.88 01 00</b>	81 x 81 x 75
<b>06.88 02 00</b>	<b>16.88 02 00</b>	<b>26.88 02 00</b>	121 x 121 x 75
<b>06.88 03 00</b>	<b>16.88 03 00</b>	<b>26.88 03 00</b>	161 x 161 x 93

EDISON

# Polyester Ex Cabinets



- glass fibre reinforced enclosure systems of polyester-resin for use in all Ex-areas
- Empty enclosures for individual fittings and Ex e / Ex i terminal enclosures
- enclosures with hinged door for individual fittings
- temperature classes T6 / T5

## Technical Data

### Approvals

IECEX, ATEX, Gost R, Gost K, INMETRO

### Explosion protection

Ⓜ II 2 G

Ⓜ II 2 D

Ex e II T6 (increased safety)

Ex ia IIC T6 (intrinsic safety)

Ex e(ia) IIC T6 (mixed fitting)

### Certificates

IECEX PTB 08.0003U, PTB 01 ATEX 1061U, Gost R, INMETRO MC AEX-8296-U

IECEX PTB 08.0004, PTB 00 ATEX 1002, Gost R, INMETRO MC AEX-8503-X

### Material

glass fibre reinforced duroplastic polyester, graphite added

### Colour

RAL 9011, graphite black

### Ingress protection

IP 66 to EN 60529

### Impact resistance

7 Joule to EN 60079-0

### Flammability

self-extinguishing, UL 94/V0

### Surface resistance

<10<sup>9</sup> Ohm to IEC 60093

### Toxicity

halogen-free

### Temperature range

-20°C to +40°C (acc. T6 = 85°C max. on surface temperature)

-20°C to +55°C (acc. T5 = 100°C max. on surface temperature)

to -55°C with special marking on request

# Polyester Ex Cabinets

## Product overview

Type			
Ex e	Ex ia	empty enclosures	dimensions (H x W x D) mm
06.20 20 00	16.20 20 00	26.20 20 00	200 x 200 x 168
06.20 30 00	16.20 30 00	26.20 30 00	200 x 300 x 168
06.30 40 00	16.30 40 00	26.30 40 00	405 x 305 x 202
06.40 60 00	16.40 60 00	26.40 60 00	605 x 405 x 252

EDISON

# Aluminium Ex Enclosures



- Enclosure systems of diecast aluminium usable in all Ex-areas
- Empty enclosures for individual fittings or Ex e / Ex i terminal enclosures
- Optional version with window
- temperature classes T6 / T5 / T4

## Technical Data

### Approvals

IECEX, ATEX, Gost R, Gost K, INMETRO

### Explosion protection

⊕ II 2 G

⊕ II 2 D

Ex e II T6 (increased safety)

Ex ia IIC T6 (intrinsic safety)

Ex e(ia) IIC T6 (mixed fitting)

### Certificates

IECEX PTB 08.0005U, PTB 98 ATEX 3101U, Gost R, INMETRO MC AEX-8297-X

IECEX PTB 08.0006, PTB 00 ATEX 1063, Gost R, INMETRO MC AEX-8502-X

### Material

Aluminium diecast DIN EN 1706 EN AC-ALSi 12 (Fe)

### Temperature range

-20°C to +40°C (acc. T6 = 85°C max. on surface temperature)

-20°C to +55°C (acc. T5 = 100°C max. on surface temperature)

-20°C to +90°C (acc. T4 = 135°C max. on surface temperature)

to -55°C with special marking on request

### Painting

Powder coating

### Colour

RAL 7001, silver grey

### Ingress protection

IP 66 to EN 60529

### Impact resistance

7 Joule to EN 60079-0



# Aluminium Ex Enclosures

## Product overview

Type			
Ex e	Ex ia	empty enclosures	dimensions (H x W x D) mm
05.06 06 03	15.06 06 03	25.06 06 03	64 x 58 x 34
05.06 10 03	15.06 10 03	25.06 10 03	64 x 98 x 34
05.06 15 03	15.06 15 03	25.06 15 03	64 x 150 x 34
05.08 08 06	15.08 08 06	25.08 08 06	80 x 75 x 57
05.08 13 06	15.08 13 06	25.08 13 06	80 x 125 x 57
05.08 18 06	15.08 18 06	25.08 18 06	80 x 175 x 57
05.08 25 05	15.08 25 05	25.08 25 05	80 x 250 x 52
05.10 10 08	15.10 10 08	25.10 10 08	100 x 100 x 81
05.10 16 08	15.10 16 08	25.10 16 08	100 x 160 x 81
05.10 20 08	15.10 20 08	25.10 20 08	100 x 200 x 81
05.12 12 08	15.12 12 08	25.12 12 08	120 x 122 x 81
05.12 12 09	15.12 12 09	25.12 12 09	120 x 122 x 91
05.12 22 08	15.12 22 08	25.12 22 08	120 x 220 x 81
05.12 22 09	15.12 22 09	25.12 22 09	120 x 220 x 91
05.12 36 08	15.12 36 08	25.12 36 08	120 x 360 x 81
05.14 14 09	15.14 14 09	25.14 14 09	140 x 140 x 91
05.14 20 09	15.14 20 09	25.14 20 09	140 x 200 x 91
05.16 16 09	15.16 16 09	25.16 16 09	160 x 160 x 91
05.16 26 09	15.16 26 09	25.16 26 09	160 x 260 x 91
05.16 36 09	15.16 36 09	25.16 36 09	160 x 360 x 91
05.16 56 09	15.16 56 09	25.16 56 09	160 x 560 x 91
05.18 18 10	15.18 18 10	25.18 18 10	180 x 180 x 101
05.18 28 10	15.23 10 11	25.18 28 10	180 x 280 x 101
05.23 10 11	15.18 28 10	25.23 10 11	230 x 100 x 111
05.23 28 11	15.23 28 11	25.23 28 11	230 x 280 x 111
05.23 33 11	15.23 33 11	25.23 33 11	230 x 330 x 111
05.23 33 18	15.23 33 18	25.23 33 18	230 x 330 x 181
05.23 40 11	15.23 40 11	25.23 40 11	230 x 400 x 111
05.23 40 23	15.23 40 23	25.23 40 23	230 x 400 x 225
05.23 60 11	15.23 60 11	25.23 60 11	230 x 600 x 111
05.23 20 11	15.23 20 11	25.23 20 11	232 x 202 x 111
05.23 20 18	15.23 20 18	25.23 20 18	232 x 202 x 181
05.31 60 11	15.31 60 11	25.31 60 11	310 x 600 x 111
05.31 60 18	15.31 60 18	25.31 60 18	310 x 600 x 181
05.31 40 14	15.31 40 14	25.31 40 14	312 x 403 x 141
05.31 40 11	15.31 40 11	25.31 40 11	313 x 404 x 111
05.31 40 18	15.31 40 18	25.31 40 18	313 x 404 x 181
05.31 40 23	15.31 40 23	25.31 40 23	313 x 404 x 227
05.60 60 20	15.60 60 20	25.60 60 20	600 x 600 x 202

# Beluga Ex Handheld Enclosures



- Hand held enclosures as empty enclosures for Ex-applications
- 3 enclosure sizes
- Optional version with display openings

## Technical Data

### Approvals

ATEX

### Explosion protection

Ⓜ II 2 G

Ⓜ Ex e II

### Certificates

PTB 02 ATEX 1076U

### Temperature range

-20°C to +60°C

### Material

Polyamide 12

### Colour

RAL 9005, jet black

### Ingress protection

IP 65 to EN 60529

### Impact resistance

7 Joule to EN 60079-0

### Flammability

HB / UL 94

### Surface resistance

<10<sup>9</sup> Ohm to IEC 60093

# Beluga Ex Handheld Enclosures

## Product overview

Description	Type	dimensions (H x W x D) mm
Beluga 180 O-Ex	28.02 02 00	106/75 x 187 x 50
Beluga 180 G-Ex	28.02 02 01	106/75 x 187 x 50
Beluga 220 O-Ex	28.02 04 00	116/85 x 220 x 51
Beluga 220 G-Ex	28.02 04 01	116/85 x 220 x 51
Beluga 380 G-Ex	28.02 05 01	380 x 117 x 68

EDISON

# Ex d II B Flameproof Enclosure



- Flameproof aluminium enclosures for utilization with non Ex-approved electrical components
- Possible connection with Ex e terminal enclosures
- II B Version

## Technical Data

### Approvals

ATEX, Gost R

### Explosion protection

Ⓜ II 2 G

Ⓜ II 2 D

Ex d, Ex d[ia] II B

### Certificates

INERIS - 00 ATEX 0021 X

### Material

Copper free aluminium

### Colour

RAL 7035, grey

### Ingress protection

IP 65 / IP 67 to EN 60529 on request

### Temperature range

-50°C to +55°C / Ex-d IIB T6/T5/T4

-50°C to +40°C / Ex-d (ia) IIB T6

-50°C to +40°C / Ex-d (ib) IIB T6

-50°C to +55°C / Ex-d IIB+H2 T6/T5/T4

-50°C to +40°C / Ex-d (ia) IIB+H2 T6

-50°C to +40°C / Ex-d (ib) IIB+H2 T6

# Ex d II B Flameproof Enclosures

## Type

	Description	Height - internal	Width	Depth	Height - external	Width	Depth
40.00 10 01	EJB 2	168 mm	230 mm	135 mm	238 mm	298 mm	174 mm
40.00 10 02	EJB 3	167 mm	340 mm	136 mm	238 mm	412 mm	177 mm
40.00 10 03	EJB 4	220 mm	335 mm	132 mm	302 mm	418 mm	175 mm
40.00 10 04	EJB 5	210 mm	392 mm	182 mm	300 mm	480 mm	232 mm
40.00 10 05	EJB 6	310 mm	387 mm	186 mm	408 mm	483 mm	238 mm
40.00 10 06	EJB 8	262 mm	530 mm	204 mm	365 mm	634 mm	254 mm
40.00 10 07	EJB 9	363 mm	426 mm	204 mm	468 mm	535 mm	257 mm
40.00 10 08	EJB 10	250 mm	630 mm	234 mm	366 mm	750 mm	292 mm
40.00 10 09	EJB 11	394 mm	483 mm	204 mm	505 mm	596 mm	267 mm
40.00 10 10	EJB 12	335 mm	690 mm	243 mm	455 mm	805 mm	310 mm
40.00 10 11	EJB 13	500 mm	723 mm	236 mm	607 mm	832 mm	314 mm
40.00 10 12	EJB 3a	167 mm	340 mm	158 mm	238 mm	412 mm	199 mm
40.00 10 13	EJB 13a	500 mm	723 mm	322 mm	607 mm	832 mm	400 mm

# Ex d II B Flameproof Enclosure



- Flameproof stainless steel enclosures for utilization with non Ex-approved electrical components
- Possible connection with Ex e terminal enclosures
- II B Version

## Technical Data

### Approvals

ATEX, Gost R

### Explosion protection

Ⓢ d II B T6-T4

Ⓢ II 2 G or II 2 (1/2) G + M1

### Certificates

NEMKO 03ATEX264U

### Temperature range

-50°C to +60°C (Temperature class T6)

### Material

acid resistant stainless steel S5316

### Surface

glass bead pearled

### Ingress protection

IP 66 to EN 60529 (IP 67 and IP 68 on request)

# Ex d II B Flameproof Enclosures

## Type

	Description	Height - internal	Width	Depth	Height - external	Width	Depth
40.00 14 01	TNBCD 262531	226 mm	216 mm	265 mm	300 mm	290 mm	315 mm
40.00 14 02	TNBCD 323321	286 mm	296 mm	165 mm	360 mm	370 mm	215 mm
40.00 14 03	TNBCD 453535	416 mm	316 mm	305 mm	490 mm	390 mm	355 mm
40.00 14 04	TNBCD 573835	525 mm	326 mm	305 mm	615 mm	420 mm	355 mm

EDISON

# Ex d II C Flameproof Enclosure



- Flameproof aluminium enclosures for utilization with non Ex-approved electrical components
- Possible connection with Ex e terminal enclosures
- II C Version

## Technical Data

### Approvals

ATEX, Gost R

### Explosion protection

Ⓜ II 2 G / 2 D

Ex d, Ex d[ia] II C

### Certificates

INERIS - ATEX 0033 X

### Material

Copper free aluminium

### Temperature range

-50°C to +55°C / Ex-d IIC T6/T5/T4

-50°C to +40°C / Ex-d (ia) IIC T6

-50°C to +40°C / Ex-d (ib) IIC T6

### Colour

RAL 7035, grey

### Ingress protection

IP 66 / IP 67 to EN 60529 on request



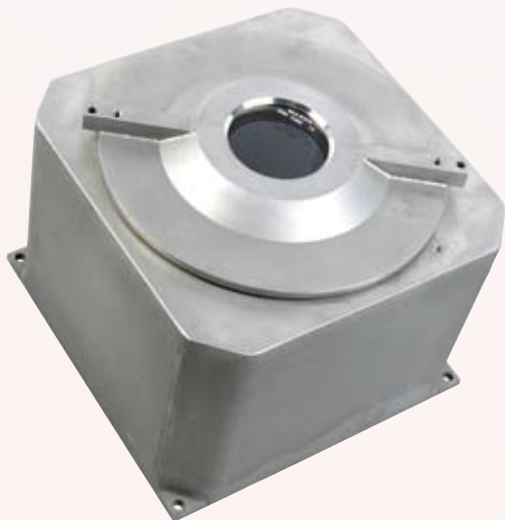
# Ex d II C Flameproof Enclosures

## Type

	Description	Height - internal	Width	Depth	Height - external	Width	Depth
40.00 12 02	GUB 1	139 mm	139 mm	62 mm	169 mm	169 mm	152 mm
40.00 12 03	GUB 2	160 mm	160 mm	63 mm	190 mm	190 mm	164 mm
40.00 12 04	GUB 3	180 mm	180 mm	78 mm	210 mm	210 mm	179 mm
40.00 12 05	GUB 4	251 mm	202 mm	97 mm	281 mm	232 mm	206 mm
40.00 12 06	GUB 5	268 mm	227 mm	106 mm	298 mm	257 mm	222 mm
40.00 12 07	GUB 6	295 mm	259 mm	140 mm	329 mm	280 mm	248 mm

EDISON

# Ex d II C Flameproof Enclosure



- Flameproof stainless steel enclosures for utilization with non Ex-approved electrical components
- Possible connection with Ex e terminal enclosures
- II C Version

## Technical Data

### Approvals

ATEX

### Explosion protection

Ⓜ d II C T6-T4

Ⓜ II 2 G or II 2 (1/2) G + M1

### Certificates

NEMKO 03ATEX263U

### Temperature range

-20°C to +60°C (Temperature class T6)

### Material

acid resistant stainless steel S316

### Surface

glass bead pearled

### Ingress protection

IP 66 to EN 60529 (IP 67 on request)

# Ex d II C Flameproof Enclosures

## Type

	Description	Height - internal	Width	Depth	Height - external	Width	Depth
40.00 13 01	TNCD 191918	170 mm	170 mm	131 mm	190 mm	190 mm	213 mm
40.00 13 02	TNCD 282827	260 mm	260 mm	217 mm	280 mm	280 mm	300 mm
40.00 13 03	TNCD 383827	360 mm	360 mm	217 mm	380 mm	380 mm	300 mm
40.00 13 04	TNCD 575727	550 mm	550 mm	213 mm	570 mm	570 mm	300 mm

EDISON

# Ex Control Station



- engineering and manufacturing
- individual fitting with Push Buttons, switches and indicating diode lamps
- enclosures from material stainless steel, polyester and aluminium

## Technical Data

### Explosion protection

Ⓜ II 2 G

Ⓜ II 2 D

### Certificates

Aluminium Enclosure: PTB 00 ATEX 1063

GRP Enclosure: PTB 00 ATEX 1002

Stainless Steel enclosure: PTB 00 ATEX 1052

### Ingress protection

IP 66 to EN 60529

### Impact resistance

7 Joule to EN 60079-0

### Temperature range

according fitting

# Ex Control Station



# Ex-Polyester Empty Enclosure for Mining



- Polyester enclosures with impact resistance of 20 Joule
- Empty enclosures for individual fittings
- Silicone seal and allen lid screws

## Technical Data

### Approvals

ATEX

### Explosion protection

Ⓢ I M 1 Ex ia I

Ⓢ I M 2 Ex e I

### Certificates

IBExU, 06 ATEX 1065U

### Material

glass fibre reinforced duroplastic polyester, graphite added

### Colour

RAL 9011, graphite black

### Ingress protection

IP 54 to EN 60529

### Impact resistance

20 Joule to EN 60079-0

### Surface resistance

<10<sup>9</sup> Ohm to IEC 60093

### Toxicity

halogen-free

### Temperature range

-55°C to +100°C

# Ex-Polyester Empty Enclosure for Mining

## Product overview

Type	dimensions (H x W x D) mm
48.08 08 06	75 x 80 x 56
48.08 08 08	75 x 80 x 75
48.08 11 06	75 x 110 x 56
48.08 11 08	75 x 110 x 75
48.08 16 06	75 x 160 x 56
48.08 16 08	75 x 160 x 75
48.08 19 06	75 x 190 x 56
48.08 19 08	75 x 190 x 75
48.12 12 09	120 x 122 x 91
48.12 22 09	120 x 220 x 91
48.16 16 09	160 x 160 x 91
48.16 26 09	160 x 260 x 91
48.16 36 09	160 x 360 x 91
48.16 56 09	160 x 560 x 91
48.25 26 12	250 x 255 x 121
48.25 26 16	250 x 255 x 161
48.25 40 12	250 x 400 x 121
48.25 40 16	250 x 400 x 161
48.25 60 12	250 x 600 x 121
48.36 36 09	360 x 360 x 91
48.41 40 12	405 x 400 x 121
48.41 40 20	405 x 400 x 201

# Ex Control Equipment



## Pushbutton

Metal Version	Colour	Contact	Product-/Article description
83.32 01 01	white	N/O	without silicone boot
83.32 01 02	black	N/O	without silicone boot
83.32 01 03	green	N/O	without silicone boot
83.32 01 05	yellow	N/O	without silicone boot
83.32 01 06	blue	N/O	without silicone boot
83.32 10 04	red	N/C	without silicone boot

### Explosion protection

⊕ II 2D IP66 T85°C

⊕ II 2G Ex ed II T6

### Certificates

INERIS - 02 ATEX 9007-U

### Temperature range

-20°C to +80°C for actuator

### Mounting depth

57 mm

### Front panel cutout (mm)

22,3mm +0,4mm /-0mm

### Connections

Screw terminals



## Pushbutton

Metal Version	Colour	Contact	Product-/Article description
83.33 01 01	white	N/O	with silicone boot
83.33 01 02	black	N/O	with silicone boot
83.33 01 03	green	N/O	with silicone boot
83.33 01 05	yellow	N/O	with silicone boot
83.33 01 06	blue	N/O	with silicone boot
83.33 10 04	red	N/C	with silicone boot

### Explosion protection

⊕ II 2D IP66 T85°C

⊕ II 2G Ex ed II T6

### Certificates

INERIS - 02 ATEX 9007-U

### Temperature range

-20°C to +80°C for actuator

### Mounting depth

57 mm

### Front panel cutout (mm)

22,3mm +0,4mm /-0mm

### Connections

Screw terminals



# Ex Control Equipment



## Pushbutton

plastic version	Colour	Contact	Product-/Article description
83.43 01 01	white	N/O	with silicone boot
83.43 01 02	black	N/O	with silicone boot
83.43 01 03	green	N/O	with silicone boot
83.43 01 05	yellow	N/O	with silicone boot
83.43 01 06	blue	N/O	with silicone boot
83.43 10 04	red	N/C	with silicone boot

### Explosion protection

⊕ II 2D IP66 T85°C

⊕ II 2G Ex ed II T6

### Certificates

INERIS - 02 ATEX 9007-U

### Temperature range

-20°C to +80°C for actuator

### Mounting depth

57 mm

### Front panel cutout (mm)

22,3mm +0,4mm /-0mm

### Connections

Screw terminals



## Pushbutton

Metal Version	Colour	Contact	Product-/Article description
83.32 01 42	black	N/O	with Ø 40mm head, spring return
83.32 01 43	green	N/O	with Ø 40mm head, spring return
83.32 01 45	yellow	N/O	with Ø 40mm head, spring return
83.32 01 46	blue	N/O	with Ø 40mm head, spring return
83.32 10 44	red	N/C	with Ø 40mm head, spring return

### Explosion protection

⊕ II 2D IP66 T85°C

⊕ II 2G Ex ed II T6

### Certificates

INERIS - 02 ATEX 9007-U

### Temperature range

-20°C to +80°C for actuator

### Mounting depth

57 mm

### Front panel cutout (mm)

22,3mm +0,4mm /-0mm

### Connections

Screw terminals

# Ex Control Equipment



## Pushbutton

plastic version	Colour	Contact	Product-/Article description
83.43 01 42	black	N/O	with Ø 40mm head, spring return
83.43 01 43	green	N/O	with Ø 40mm head, spring return
83.43 01 45	yellow	N/O	with Ø 40mm head, spring return
83.43 01 46	blue	N/O	with Ø 40mm head, spring return
83.43 10 44	red	N/C	with Ø 40mm head, spring return

### Explosion protection

⊕ II 2D IP66 T85°C

⊕ II 2G Ex ed II T6

### Certificates

INERIS - 02 ATEX 9007-U

### Temperature range

-20°C to +80°C for actuator

### Mounting depth

57 mm

### Front panel cutout (mm)

22,3mm +0,4mm /-0mm

### Connections

Screw terminals



## Push-Push Button

Metal Version	Colour	Contact	Product-/Article description
83.32 01 11	white	N/O	Push Button, stay put, flat
83.32 01 12	black	N/O	Push Button, stay put, flat
83.32 01 13	green	N/O	Push Button, stay put, flat
83.32 01 15	yellow	N/O	Push Button, stay put, flat
83.32 01 16	blue	N/O	Push Button, stay put, flat
83.32 10 14	red	N/O	Push Button, stay put, flat

### Explosion protection

⊕ II 2D IP66 T85°C

⊕ II 2G Ex ed II T6

### Certificates

INERIS - 02 ATEX 9007-U

### Temperature range

-20°C to +80°C for actuator

### Mounting depth

58 mm

### Front panel cutout (mm)

22,3mm +0,4mm /-0mm

### Connections

Screw terminals

# Ex Control Equipment



## Explosion protection

Ⓜ II 2D IP66 T85°C

Ⓜ II 2G Ex ed II T6

## Certificates

INERIS - 02 ATEX 9007-U

## Temperature range

-20°C to +80°C for actuator

## Mounting depth

57 mm

## Front panel cutout (mm)

22,3mm +0,4mm /-0mm

## Connections

Screw terminals

## Emergency stop pushbutton mushroom head

Metal Version	Colour	Contact	Product-/Article description
83.34 01 02	black	N/O	Ø 40 mm head push button, push-pull
83.34 01 22	black	N/O	Ø 40 mm head push button, turn to release
83.34 01 42	black	N/O	head push button, key release (n°. 455)
83.34 10 04	red	N/C	Ø 40 mm head push button, push-pull
83.34 10 14	red	N/C	Ø 40 mm head push button, push-pull
83.34 10 24	red	N/C	Ø 40 mm head push button, turn to release
83.34 10 44	red	N/C	head push button, key release (n°. 455)



## Explosion protection

Ⓜ II 2D IP66 T85°C

Ⓜ II 2G Ex ed II T6

## Certificates

INERIS - 02 ATEX 9007-U

## Temperature range

-20°C to +80°C for actuator

## Mounting depth

57 mm

## Front panel cutout (mm)

22,3mm +0,4mm /-0mm

## Connections

Screw terminals

## Emergency stop pushbutton mushroom head

plastic version	Colour	Contact	Product-/Article description
83.44 10 04	red	N/C	Ø 40 mm head push button, push-pull
83.44 10 14	red	N/C	Ø 40 mm head push button, push-pull
83.44 10 24	red	N/C	Ø 40 mm head push button, turn to release
83.44 10 44	red	N/C	Ø 40 mm head with keylock, key 455

# Ex Control Equipment



## Explosion protection

Ⓜ II 2D IP66 T85°C

Ⓜ II 2G Ex ed II T6

## Certificates

INERIS - 02 ATEX 9007-U

## Temperature range

-20°C to +80°C for actuator

## Mounting depth

57 mm

## Front panel cutout (mm)

22,3mm +0,4mm /-0mm

## Connections

Screw terminals

## Selector switch

plastic version	Colour	Contact	Product-/Article description
83.45 01 12	black	N/O	2 position stay put
83.45 01 32	black	N/O	2 position stay put
83.45 01 52	black	N/O	2 position stay put
83.45 02 13	black	N/O + N/O	3 position stay put
83.45 02 33	black	N/O + N/O	3 position stay put
83.45 02 53	black	N/O + N/O	3 position stay put
83.47 01 10	black	N/O	2 position stay put, key withdrawal in centre position
83.47 01 13	black	N/O	2 position stay put, key withdrawal in both position
83.47 02 31	black	N/O + N/O	3 position stay put, key withdrawal in centre position
83.47 02 33	black	N/O + N/O	3 position stay put, key withdrawal in all 3 positions



## Explosion protection

Ⓜ II 2D IP66 T85°C

Ⓜ II 2G Ex ed II T6

## Certificates

INERIS - 02 ATEX 9007-U

## Temperature range

-20°C to +80°C for actuator

## Mounting depth

57 mm

## Front panel cutout (mm)

22,3mm +0,4mm /-0mm

## Connections

Screw terminals

## Selector switch

Metal Version	Colour	Contact	Product-/Article description
83.35 01 12	black	N/O	2 position stay put
83.35 01 32	black	N/O	2 position stay put
83.35 01 52	black	N/O	2 position stay put
83.35 02 13	black	N/O + N/O	3 position stay put
83.35 02 33	black	N/O + N/O	3 position stay put
83.35 02 53	black	N/O + N/O	3 position stay put
83.37 01 10	black	N/O	2 position stay put, key withdrawal in the left position
83.37 01 13	black	N/O	2 position stay put, key withdrawal in both position
83.37 02 31	black	N/O + N/O	3 position stay put, key withdrawal in centre position
83.37 02 33	black	N/O + N/O	3 position stay put, key withdrawal in all 3 positions

# Ex Control Equipment



## Explosion protection

Ⓜ II 2D IP66 T85°C

Ⓜ II 2G Ex ed II T6

## Certificates

INERIS - 02 ATEX 9007-U

## Temperature range

-20°C to +80°C for actuator

## Mounting depth

57 mm

## Front panel cutout (mm)

22,3mm +0,4mm /-0mm

## Connections

Screw terminals

## Selector switch

Metal Version	Colour	Contact	Product-/Article description
83.35 01 02	black	N/O	2 position spring return
83.35 01 22	black	N/O	2 position spring return
83.35 01 42	black	N/O	2 position spring return
83.35 02 03	black	N/O + N/O	3 position spring return to centre
83.35 02 23	black	N/O + N/O	3 position spring return to centre
83.35 02 43	black	N/O + N/O	3 position spring return to centre
83.37 01 00	black	N/O	2 position spring return, key withdrawal in left position



## Explosion protection

Ⓜ II 2D IP66 T85°C

Ⓜ II 2G Ex ed II T6

## Certificates

INERIS - 02 ATEX 9007-U

## Temperature range

-20°C to +80°C for actuator

## Mounting depth

57 mm

## Front panel cutout (mm)

22,3mm +0,4mm /-0mm

## Connections

Screw terminals

## Selector switch

plastic version	Colour	Contact	Product-/Article description
83.45 01 02	black	N/O	2 position spring return
83.45 01 22	black	N/O	2 positions spring return
83.45 02 03	black	N/O + N/O	3 position return spring to centre
83.45 02 23	black	N/O + N/O	3 position spring return to centre
83.45 02 42	black	N/O	2 position spring return
83.45 02 43	black	N/O + N/O	3 position spring return to centre
83.47 01 00	black	N/O	2 position spring return

# Ex Control Equipment



## Explosion protection

⊕ II 2D IP66 T85°C

⊕ II 2G Ex ed II T6

## Certificates

INERIS - 02 ATEX 9007-U, INERIS - 04 ATEX 9003-U

## Temperature range

-20°C to +65° for pilot

## Mounting depth

57 mm

## Front panel cutout (mm)

22,3mm +0,4mm /-0mm

## Connections

Screw terminals

## Illuminated pushbutton, „push-push“

Metal Version	Colour	Contact	Product-/Article description
83.32 01 61	white	N/O	stay put, flat
83.32 01 63	green	N/O	stay put, flat
83.32 01 65	yellow	N/O	stay put, flat
83.32 01 66	blue	N/O	stay put, flat
83.32 01 81	white	N/O	stay put, high
83.32 01 83	green	N/O	stay put, high
83.32 01 85	yellow	N/O	stay put, high
83.32 01 86	blue	N/O	stay put, high
83.32 10 64	red	N/C	stay put, flat
83.32 10 84	red	N/C	stay put, high



## Explosion protection

⊕ II 2D IP66 T85°C

⊕ II 2G Ex ed II T6

## Certificates

INERIS - 02 ATEX 9007-U, INERIS - 04 ATEX 9003-U

## Temperature range

-20°C to +65° for pilot lamp

## Mounting depth

57 mm

## Front panel cutout (mm)

22,3mm +0,4mm /-0mm

## Connections

Screw terminals

## Illuminated pushbutton

Metal Version	Colour	Contact	Product-/Article description
83.32 01 51	white	N/O	flush
83.32 01 53	green	N/O	flush
83.32 01 55	yellow	N/O	flush
83.32 01 56	blue	N/O	flush
83.32 10 54	red	N/C	flush

# Ex Control Equipment



## Explosion protection

⊕ II 2D IP66 T85°C

⊕ II 2G Ex ed II T6

## Certificates

INERIS - 02 ATEX 9007-U, INERIS - 04 ATEX 9003-U

## Temperature range

-20°C to +65° for pilot lamp

## Mounting depth

57 mm

## Front panel cutout (mm)

22,3mm +0,4mm /-0mm

## Connections

Screw terminals

## Illuminates selector switch

Metal Version	Colour	Contact	Product-/Article description
83.36 01 11	white	N/O	2 position stay put
83.36 01 13	green	N/O	2 position stay put
83.36 01 15	yellow	N/O	2 position stay put
83.36 01 16	blue	N/O	2 position stay put
83.36 01 31	white	N/O + N/O	3 position stay put
83.36 01 33	green	N/O + N/O	3 position stay put
83.36 01 35	yellow	N/O + N/O	3 position stay put
83.36 01 36	blue	N/O + N/O	3 position stay put
83.36 10 14	red	N/C	2 position stay put
83.36 10 34	red	N/O + N/O	3 position stay put



## Pilot light

Metal Version	Colour	Product-/Article description
83.31 00 01	white	Pilot lamp
83.31 00 03	green	Pilot lamp
83.31 00 04	red	Pilot lamp
83.31 00 05	yellow	Pilot lamp
83.31 00 06	blue	Pilot lamp

## Explosion protection

⊕ II 2D IP66 T85°C

⊕ II 2G Ex em II T6

## Certificates

INERIS - 04 ATEX 9003-U

## Temperature range

-20°C to +65° for pilot lamp

## Mounting depth

57 mm

## Front panel cutout (mm)

22,3mm +0,4mm /-0mm

## Connections

Screw terminals

# Ex Control Equipment



## Pilot light

plastic version	Colour	Product-/Article description
83.41 00 01	white	Pilot lamp
83.41 00 03	green	Pilot lamp
83.41 00 04	red	Pilot lamp
83.41 00 05	yellow	Pilot lamp
83.41 00 06	blue	Pilot lamp

## Explosion protection

⊕ II 2D IP66 T85°C

⊕ II 2G Ex em II T6

## Certificates

INERIS - 04 ATEX 9003-U

## Temperature range

-20°C to +65° for pilot lamp

## Mounting depth

57 mm

## Front panel cutout (mm)

22,3mm +0,4mm /-0mm

## Connections

Screw terminals

## Service life pilot lamps

100.000h bei Tu



# Ex Installation Material



## Explosion protection

⊕ II 2 G / 2 D

## Colour

RAL 9005, jet black

## Ingress protection

IP 68 to EN 60529 with seal

## Temperature range

-20°C to +80°C

## Material

Polyamide 6

## Exe-Polyamide-Cable glands

Order-No.	Type	Cable Ø	width across flats	Corner Dimension	Pack of
08.06 00 07	7	3,5 - 6	15 mm	16.8 mm	20
08.06 00 09	9	5 - 8	19 mm	21.3 mm	20
08.06 00 11	11	6 - 10	22 mm	24.2 mm	20
08.06 00 13	13,5	8 - 13	24 mm	26.8 mm	20
08.06 00 16	16	10 - 15	26 mm	29.2 mm	20
08.06 00 21	21	13 - 19	32 mm	35.3 mm	20
08.06 00 29	29	17 - 25	41 mm	45.2 mm	10
08.06 00 36	36	24 - 32	52 mm	57.6 mm	10
08.06 00 42	42	28 - 38	59 mm	65.1 mm	10
08.06 00 48	48	34 - 44	65 mm	71.3 mm	10
08.08 06 16	M 16 x 1,5	5 - 8	19 mm	21.3 mm	20
08.08 06 20	M 20 x 1,5	8 - 13	24 mm	26.7 mm	20
08.08 06 25	M 25 x 1,5	13 - 19	32 mm	35.0 mm	20
08.08 06 32	M 32 x 1,5	17 - 25	41 mm	45.3 mm	10
08.08 06 40	M 40 x 1,5	24 - 32	52 mm	57.2 mm	10
08.08 06 50	M 50 x 1,5	28 - 38	59 mm	65.3 mm	10
08.08 06 63	M 63 x 1,5	34 - 44	65 mm	71.3 mm	10



## Explosion protection

⊕ II 2 G / 2 D

## Colour

RAL 5012, light blue

## Ingress protection

IP 68 to EN 60529 with seal

## Temperature range

-20°C to +80°C

## Material

Polyamide 6

## Exi-Polyamide-Cable glands

Order-No.	Type	Cable Ø	width across flats	Corner Dimension	Pack of
08.06 50 07	7	3,5 - 6	15 mm	16.8 mm	20
08.06 50 09	9	5 - 8	19 mm	21.3 mm	20
08.06 50 11	11	6 - 10	22 mm	24.2 mm	20
08.06 50 13	13,5	8 - 13	24 mm	26.8 mm	20
08.06 50 16	16	10 - 15	26 mm	29.2 mm	20
08.06 50 21	21	13 - 19	32 mm	35.3 mm	20
08.06 50 29	29	17 - 25	41 mm	45.2 mm	10
08.06 50 36	36	24 - 32	52 mm	57.6 mm	10
08.06 50 42	42	28 - 38	59 mm	65.1 mm	10
08.06 50 48	48	34 - 44	65 mm	71.3 mm	10
08.08 07 16	M 16 x 1,5	5 - 8	19 mm	21.3 mm	20
08.08 07 20	M 20 x 1,5	8 - 13	24 mm	26.7 mm	20
08.08 07 25	M 25 x 1,5	13 - 19	32 mm	35.0 mm	20
08.08 07 32	M 32 x 1,5	17 - 25	41 mm	45.3 mm	10
08.08 07 40	M 40 x 1,5	24 - 32	52 mm	57.2 mm	10
08.08 07 50	M 50 x 1,5	28 - 38	59 mm	65.3 mm	10
08.08 07 63	M 63 x 1,5	34 - 44	65 mm	71.3 mm	10

# Ex Installation Material



## Explosion protection

⊕ II 2 G / 2 D

## Colour

RAL 9005, jet black, blue on request

## Ingress protection

IP 68 to EN 60529 with seal

## Temperature range

-20°C to 80°C

## Material

Polyamide 6

## Exe-Polyamide-Blind plugs

Order-No.	Type	width across flats	Corner Dimension	Pack of
08.05 67 07	7	15 mm	16.5 mm	100
08.05 67 09	9	19 mm	20.9 mm	100
08.05 67 11	11	22 mm	24.2 mm	100
08.05 67 13	13,5	24 mm	26.4 mm	100
08.05 67 16	16	27 mm	29.7 mm	100
08.05 67 21	21	32 mm	35.2 mm	100
08.05 67 29	29	40 mm	44.0 mm	50
08.05 67 36	36	54 mm	59.4 mm	20
08.05 67 42	42	59 mm	64.9 mm	20
08.05 67 48	48	64 mm	70.4 mm	20
08.09 06 16	M 16 x 1,5	19 mm	21.3 mm	100
08.09 06 20	M 20 x 1,5	23 mm	25.3 mm	100
08.09 06 25	M 25 x 1,5	28 mm	30.8 mm	100
08.09 06 32	M 32 x 1,5	36 mm	39.3 mm	100
08.09 06 40	M 40 x 1,5	44 mm	48.3 mm	20
08.09 06 50	M 50 x 1,5	54 mm	59.7 mm	20
08.09 06 63	M 63 x 1,5	67 mm	74.0 mm	20

## Ex-Brass-Cable glands



## Explosion protection

⊕ II 2 G Ex e II

⊕ II 1 D IP 68

## Ingress protection

IP 68 to EN 60529

## Temperature range

-20°C to +95°C

## Material

brass, nickelplated

Order-No.	Type	Cable Ø	width across flats	Corner Dimension	Pack of
08.04 07 07	7	3,5 - 6	14 mm	15.6 mm	50
08.04 07 09	9	4 - 8	17 mm	19.1 mm	50
08.04 07 11	11	5 - 10	20 mm	22.3 mm	50
08.04 07 13	13,5	6 - 12	22 mm	24.9 mm	50
08.04 07 16	16	10 - 14	24 mm	22.6 mm	50
08.04 07 21	21	13 - 18	30 mm	33.6 mm	50
08.04 07 29	29	18 - 25	40 mm	44.0 mm	25
08.04 07 36	36	22 - 32	50 mm	55.0 mm	1
08.04 07 42	42	32 - 38	57 mm	59.9 mm	1
08.04 07 48	48	37 - 44	64 mm	69.9 mm	1
08.08 08 12	M 12 x 1,5	3 - 6,5	14 mm	15.6 mm	50
08.08 08 16	M 16 x 1,5	4 - 8	17 mm	19.1 mm	10
08.08 08 20	M 20 x 1,5	6 - 12	22 mm	24.4 mm	10
08.08 08 25	M 25 x 1,5	13 - 18	30 mm	33.6 mm	10
08.08 08 32	M 32 x 1,5	18 - 25	40 mm	44.0 mm	10
08.08 08 40	M 40 x 1,5	22 - 32	50 mm	55.0 mm	5
08.08 08 50	M 50 x 1,5	32 - 38	57 mm	59.9 mm	1
08.08 08 63	M 63 x 1,5	37 - 44	64 mm	69.9 mm	1

# Ex Installation Material



## Ex-Stainless steel Cable Glands

Order-No.	Type	Cable Ø	width accross flats	Corner Dimension	Pack of
08.04 02 12	M 12 x 1,5	3 - 6,5	14 mm	15.6 mm	10
08.04 02 16	M 16 x 1,5	5 - 10	20 mm	24.4 mm	10
08.04 02 20	M 20 x 1,5	10 - 14	24 mm	26.4 mm	10
08.04 02 25	M 25 x 1,5	13 - 18	30 mm	33.4 mm	10
08.04 02 32	M 32 x 1,5	20 - 25	41 mm	45.0 mm	10
08.04 02 40	M 40 x 1,5	22 - 33	50 mm	55.0 mm	5
08.04 08 07	7	3 - 6,5	14 mm	15.6 mm	25
08.04 08 09	9	4 - 8	17 mm	19.0 mm	25
08.04 08 11	11	5 - 10	22 mm	24.4 mm	25
08.04 08 13	13,5	6 - 12	22 mm	24.4 mm	25
08.04 08 16	16	10 - 14	24 mm	26.4 mm	25
08.04 08 21	21	13 - 18	30 mm	33.5 mm	25
08.04 08 29	29	18 - 25	41 mm	45.1 mm	1
08.04 08 36	36	22 - 32	50 mm	55.0 mm	1

### Explosion protection

⊕ II 2 G EXe II

⊕ II 1 D IP 68

### Ingress protection

IP 68 to EN 60529

### Temperature range

-20°C to +95°C

### Material

1.4305 Stainless Steel

### Seal insert

NBR

## Ex-Polyamide-Drain plugs

	Dimensions	pcs.
08.51 01 25	M 25 x 1,5	1



### Explosion protection

⊕ II 2 G / 2 D

### Ingress protection

IP 66

### Temperature range

-20°C bis +40°C

### Material

Polyamide

### Seal insert

NBR

# Ex Installation Material



## Explosion protection

⊕ II 2 G / 2 D

## Ingress protection

IP 68 to EN 60529

## Temperature range

-20°C to +95°C

## Material

brass, nickelplated

## Ex-Brass-Drain plugs

Order-No.	Type	width across flats	Corner Dimension	Pack of
08.08 09 07	7	14 mm	15.6 mm	50
08.08 09 09	9	17 mm	19.3 mm	50
08.08 09 11	11	20 mm	22.3 mm	50
08.08 09 13	13	22 mm	24.9 mm	50
08.08 09 16	16	24 mm	26.6 mm	50
08.08 09 21	21	30 mm	33.6 mm	50
08.08 09 29	29	41 mm	44.0 mm	25
08.08 09 36	36	50 mm	55.0 mm	10
08.08 09 42	42	58 mm	64.5 mm	10
08.08 09 48	48	65 mm	71.5 mm	10



## Explosion protection

⊕ II 2 G / 2 D

## Ingress protection

IP 66 to EN 60529

## Temperature range

-20°C bis +40°C

## Material

1.4305 Stainless Steel

## Seal insert

NBR

## Ex-Stainless steel-Drain plugs

	Dimensions	pcs.
08.51 10 20	M 20 x 1,5	1