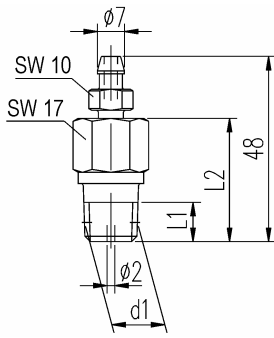
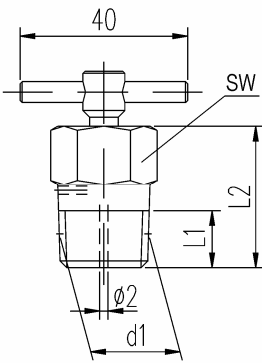


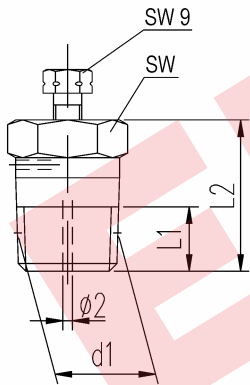
## Mounting accessories, vent valves and screw plugs



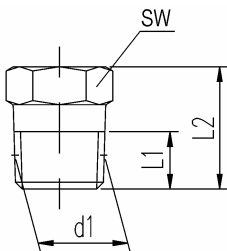
Accessory	Connections				Material	Part no.
	d1	L1 [mm]	L2 [mm]	SW		
<b>Vent valve</b> With hose nipple for tube $\varnothing$ 7 mm	1/4 NPT	10,2	32	17	316Ti (1.4571)	VV-TN-02-SS



Accessory	Connections				Material	Part no.
	d1	L1 [mm]	L2 [mm]	SW		
<b>Vent valve</b>	1/4 NPT	10,2	34	19	1.0501	VV-TH-02-SC
					316L (1.4404)	VV-TH-02-SS
	3/8 NPT	10,4		22	1.0501	VV-TH-03-SC
					316L (1.4404)	VV-TH-03-SS
	1/2 NPT	13,6	22	1.0501	VV-TH-04-SC	
				316L (1.4404)	VV-TH-04-SS	



Accessory	Connections				Material	Part no.
	d1	L1 [mm]	L2 [mm]	SW		
<b>Vent valve</b>	1/4 NPT	10,2	28	14	1.0501	VV-VS-02-SC
					316L (1.4404)	VV-VS-02-SS
	3/8 NPT	10,4		19	1.0501	VV-VS-03-SC
					316L (1.4404)	VV-VS-03-SS
	1/2 NPT	13,6	32	22	1.0501	VV-VS-04-SC
					316L (1.4404)	VV-VS-04-SS



Accessory	Connections				Material	Part no.
	d1	L1 [mm]	L2 [mm]	SW		
<b>Screw plug</b>	1/4 NPT	10,2	22	14	1.0501	PLUG-02-SC
					316L (1.4404)	PLUG-02-SS
	3/8 NPT	10,4		19	1.0501	PLUG-03-SC
					316L (1.4404)	PLUG-03-SS
	1/2 NPT	13,6	29	22	1.0501	PLUG-04-SC
					316L (1.4404)	PLUG-04-SS