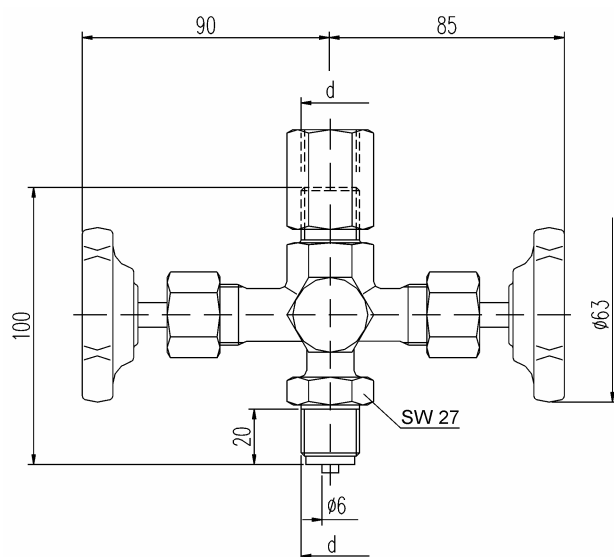
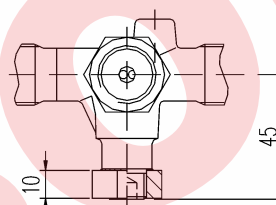
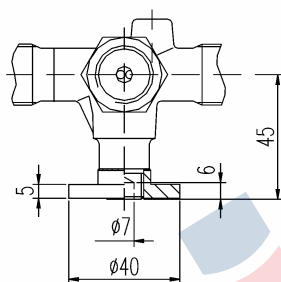
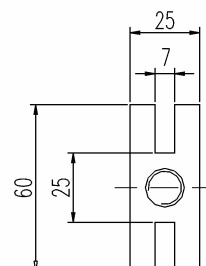
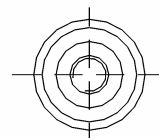


Double pressure gauge valve with test flange



test flange
Ø 40 x 5 mm

test flange
60 x 25 x 10 mm



MOUNTING ACCESSORIES see section 10

PN	Connection thread d	Material	Part no. with test flange	
			Ø 40 x 5 mm	60 x 25 x 10 mm
250	G 1/2	brass	15-V02-2TFC-MS-51-250	15-V02-2TFR-MS-51-250
400		steel	15-V02-2TFC-SC-51-400	15-V02-2TFR-SC-51-400
400		st. stl.	15-V02-2TFC-SS-51-400	15-V02-2TFR-SS-51-400

Components	Brass ¹⁾	Steel	Stainless steel ¹⁾
	DIN-Material Number		
Body ²⁾	brass	1.0460	316Ti (1.4571)
Flange	brass	steel	316Ti (1.4571)
Valve stem	1.4104		316Ti (1.4571)
Needle tip	1.4104		316Ti (1.4571)
Packing	PTFE up to 200 °C		
Union nut	steel		stainless steel
Adjusting nut	steel		stainless steel
Hand wheel	plastic		

- **Body:** brass: pressed part
steel/stainless steel: die-pressed part
- **Surface:** steel phosphatized
- Internal stem thread
- Stem with cold rolled surface and non-rotating needle tip

¹⁾ Can also be supplied for oxygen service.

Please notice order instruction B 3!

²⁾ Available with inspection certificate 3.1.B according to EN 10 204