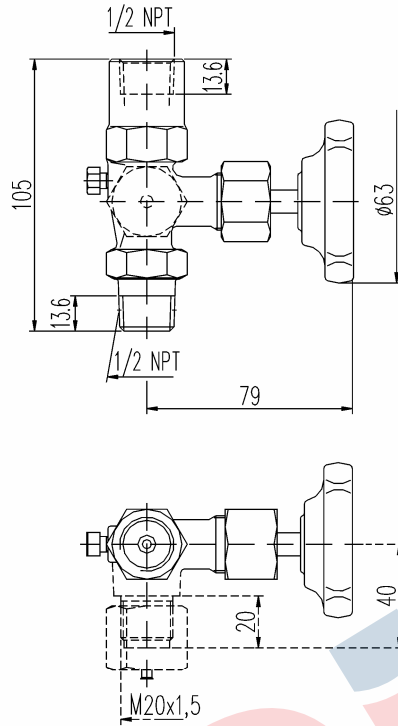


## Pressure gauge valve male/female 1/2 NPT

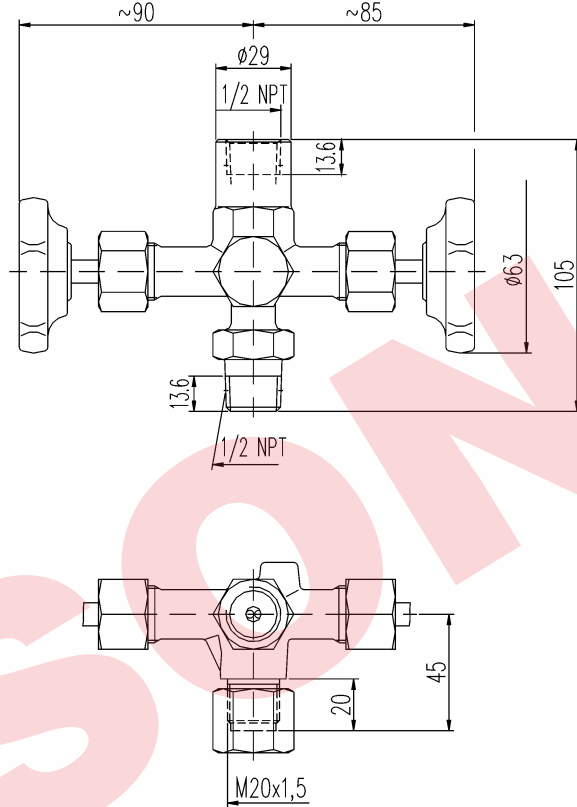
**Type 1**

Pressure gauge valve without,  
alternative with test connection



**Type 2**

Double pressure gauge valve  
with test connection



MOUNTING ACCESSORIES see section 10

| PN  | Connection<br>thread<br>d | Material          | Part no.            |  |                     |
|-----|---------------------------|-------------------|---------------------|--|---------------------|
|     |                           |                   | without             | Type 1<br>with<br>test connection M 20 x 1,5 | Type 2<br>without   |
| 400 | 1/2 NPT                   | steel<br>st. stl. | 04-V02-0A-SC-50-400 | 04-V02-1A-SC-50-400 <sup>3)</sup>            | 04-V02-2A-SC-50-400 |
|     |                           |                   | 04-V02-0A-SS-50-400 | 04-V02-1A-SS-50-400 <sup>3)</sup>            | 04-V02-2A-SS-50-400 |

| Components         | Steel               | Stainless steel <sup>1)</sup> |
|--------------------|---------------------|-------------------------------|
|                    | DIN-Material Number |                               |
| Body <sup>2)</sup> | 1.0460              | 316Ti (1.4571)                |
| Valve stem         | 1.4104              | 316Ti (1.4571)                |
| Needle tip         | 1.4104              | 316Ti (1.4571)                |
| Packing            | PTFE up to 200 °C   |                               |
| Union nut          | steel               | stainless steel               |
| Vent screw         | 316Ti (1.4571)      |                               |
| Hand wheel         | plastic             |                               |

- **Body:** die-pressed part
  - **Surface:** steel phosphatized
  - Internal stem thread
  - Stem with cold rolled surface and non-rotating needle tip
  - Valves with alternative test connections optional
- <sup>1)</sup> Can also be supplied for oxygen service.  
Please notice order instruction B 3!  
<sup>2)</sup> Available with inspection certificate 3.1.B acc. EN 10 204  
<sup>3)</sup> with protecting cap and sealing lense