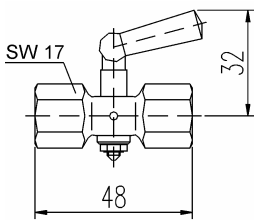
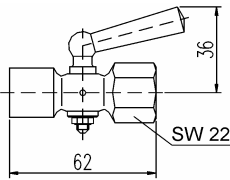
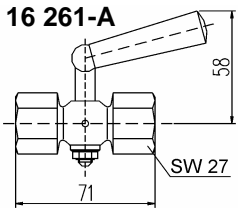
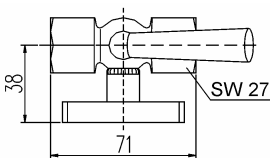
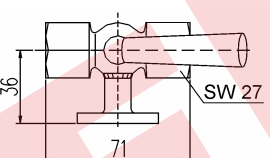
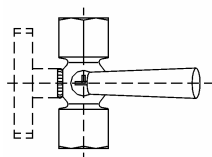


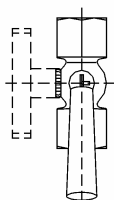
Pressure gauge cock female/female

Type	Connection thread	PN	Material	Part no.	Remarks
	G 1/4	6	brass	27-COCK-MS-27-PN6	
	G 3/8	16	brass	14-COCK-MS-14-PN16	
DIN 16 261-A 	G 1/2	25	brass	51-COCK-MS-51-PN25	
		25	stainless steel	51-COCK-SS-51-PN25	
	G 1/2	25	brass	51-CTFR-MS-51-PN25	with test flange 60 x 25 x 10 mm
	G 1/2	25	brass	51-CTFC-MS-51-PN25	with test flange Ø 40 x 5 mm

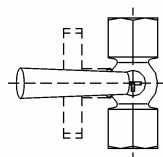
The operating positions are engraved on the plug:



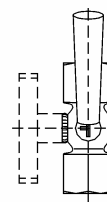
vent



operate



blow off



test
(only cock with test connection)

- Range of application:

For liquids, gas or steam, from -10 °C up to +50 °C

For pressure gauges with sealing washer according to DIN 16 258

- Plastic handle