

## Type 1007P XOR, 1001T XOR, 1005 XOR Commercial Refrigeration Gauge



### FEATURES

- **Patented PowerFlex™ movement with polyester segment for a gauge that is more shock resistant than conventional movement gauges.**
- **FlutterGuard™ a standard feature in these gauges eliminates pointer flutter.**

Ashcroft® Types 1001T, XOR 1007P, XOR and 1005, XOR are designed to meet the unique requirements of the HVAC, automotive and refrigeration industries.

Ashcroft Type 1001T, XOR gauges are designed for refrigerant recovery and recycling units. All gauges for this service are tested for leaks as small as  $2.8 \times 10^{-4}$  cc per second to ensure superior integrity. Optional connections eliminate potential leaks at threaded joints and also eliminate customer cost for extra fittings.

Ashcroft Type 1007P, XOR gauges are designed for installation on refrigeration manifolds used in testing automotive, industrial and residential air-conditioning units. The ABS case offers rugged durability and corrosion resistance.

Ashcroft Type 1005, XOR gauges are 80mm in diameter for better dial visibility. These gauges have color-coded steel cases and internally threaded polycarbonate windows.

### PRODUCT SPECIFICATIONS

<b>Ashcroft Model No:</b>	<b>1001T, XOR</b>
<b>Size:</b>	2½", 3½"
<b>Accuracy:</b>	1% at zero, 2% three fourths of scale, 5% last fourth of scale
<b>Case:</b>	Black steel with studs and U-clamp for panel mounting
<b>Ring:</b>	None
<b>Window:</b>	¼ turn polycarbonate, threaded
<b>Dial:</b>	Available refrigerant scales R12, R22, R502, R134A, 410A
<b>Pointer:</b>	Black, aluminum
<b>Bourdon Tube:</b>	Bronze
<b>Movement:</b>	Patented PowerFlex with polyester segment and FlutterGuard; slotted span screw for minor span adjustments
<b>Socket:</b>	Brass
<b>Restrictor:</b>	0.013" orifice throttle plug
<b>Connection:</b>	½ NPT back, ¼ NPT back
<b>Ranges:</b>	30 in.Hg vac./0/120 psi retard to 250 psi; 0-500 psi; 30 in.Hg vac./0/350 psi retard to 500 psi; 0-800 psi
<b>Operating Temperature:</b>	-40°F to 150°F; -40°C to 65°C
<b>Options:</b>	Nonstandard ranges Alternate refrigerant ranges SAE Flare, Solder bib and ferrule connections, Customized dials, Front flange case design (2½" only)

(Cont. on page 2)

### HOW TO ORDER (Typical example)

	25	W	1007	P	H	01L	XOR	140#/V
<b>Dial Size:</b> 2½"								
<b>Movement:</b> Patented PowerFlex™								
<b>Case Type Number:</b> 1007								
<b>Case Material:</b> ABS								
<b>Connection Material:</b> Brass								
<b>Connection Size/Location:</b> ½ NPT Lower								
<b>Refrigeration Application:</b>								
<b>Range:</b> 30"Hg vac/0/120 psi retard to 250 psi								

## Type 1007P XOR, 1001T XOR, 1005 XOR Commercial Refrigeration Gauge

### PRODUCT SPECIFICATIONS

**Ashcroft Model No:** 1007P, XOR  
**Size:** 2½"  
**Accuracy:** 1% at zero, 2% three fourths of scale, 5% last fourth of scale  
**Case:** Blue ABS - (low pressure)  
 Red ABS - (high pressure)  
**Ring:** None  
**Window:** Threaded polycarbonate  
**Dial:** Available refrigerant scales R12, R22, R502, R134A, 410A  
**Pointer:** Black, aluminum  
**Bourdon Tube:** Bronze  
**Movement:** Patented PowerFlex with polyester segment and FlutterGuard; slotted span screw for minor span adjustments  
**Socket:** Brass  
**Restrictor:** 0.020" orifice throttle plug  
**Connection:** ½ NPT lower  
**Ranges:** 30 in.Hg vac./0/120 psi retard to 250 psi; 0-500 psi; 30 in.Hg vac./0/350 psi retard to 500 psi; 0-800 psi

**Operating Temperature:** -40°F to 150°F; -40° to 65°C  
**Options:** Nonstandard ranges, Alternate refrigerant ranges, Retard to 350 psi, Customized dials, Bulk packaging

**Ashcroft Model No:** 1005, XOR  
**Size:** 80mm  
**Accuracy:** 1% at zero, 2% three fourths of scale, 5% last fourth of scale  
**Case:** Steel, painted blue (low pressure)  
 Steel, painted red (high pressure)

**Ring:** None  
**Window:** Polycarbonate, internally threaded  
**Dial:** Available refrigerant scales R12, R22, R502, R134A, 410A

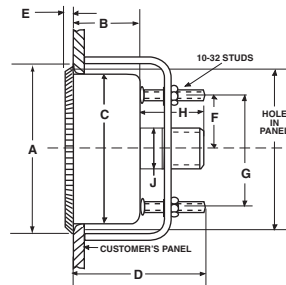
**Pointer:** Black, aluminum  
**Bourdon Tube:** Bronze  
**Movement:** Patented PowerFlex with polyester segment and FlutterGuard; slotted span screw for minor span adjustments

**Socket:** Brass  
**Restrictor:** 0.020" orifice throttle plug  
**Connection:** ½ NPT lower  
**Ranges:** 30 in.Hg vac./0/120 psi retard to 250 psi; 0-500 psi; 30 in.Hg vac./0/350 psi retard to 500 psi; 0-800 psi

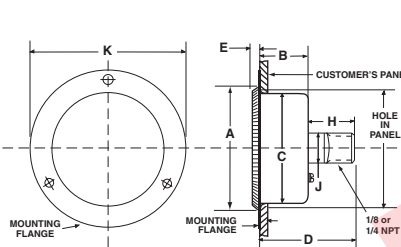
**Operating Temperature:** -40°F to 150°F  
**Options:** Nonstandard ranges, Alternate refrigerant ranges, Retard to 350 psi, Customized dials, Bulk packaging

### DIMENSIONS

Type 1001TH U-Clamp (UC)



Type 1001TH Front Flange (FF)



Case Type 1001T (UC)

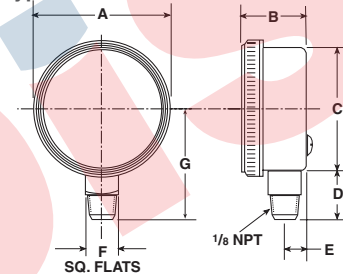
INCHES (MM)	A	B	C	D	E	F	G	H	J	K	Conn. NPT
2½"	2.87 (73)	0.97 (25)	2.57 (65)	1.97 (50)	0.16 (4)	1.00 (25)	2.00 (51)	0.88 (22)	⅞ sq. (14)	—	½ or ¼
3½"	3.96 (101)	1.00 (25)	3.61 (92)	1.72 (44)	0.20 (5)	1.53 (39)	3.06 (78)	0.88 (22)	⅞ sq. (14)	—	½ or ¼

Case Type 1001T (FF)

INCHES (MM)	A	B	C	D	E	F	G	H	J	K	Conn. NPT
2½"	2.87 (73)	0.97 (25)	2.59 (66)	—	0.17 (4)	—	—	0.86 (22)	⅞ sq. (14)	3.69 (94)	½ or ¼

Hole Diameter			
Panel Cut-out:	Min.	Max.	Max. Panel Thickness
2½" Gauge	2⅝"	2¾"	⅞"
3½" Gauge	3⅝"	3⅞"	⅞"

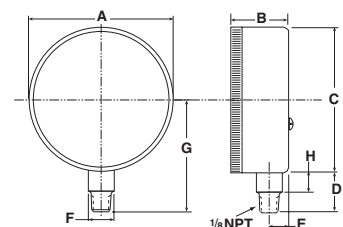
Type 1007P



Case Type 1007P

	A	B	C	D	E	F	G
2½"	2.86 (72.5)	1.14 (29)	2.6 (65.9)	0.9 (23)	0.39 (9.9)	9/16 (14)	2.18 (55.3)

Type 1005P



Case Type 1005P

	A	B	C	D	E	F	G	H
80mm	3.15 (80)	1.27 (32)	3.15 (80)	.86 (22)	.43 (11)	9/16 (14)	2.44 (62)	.41 (11)