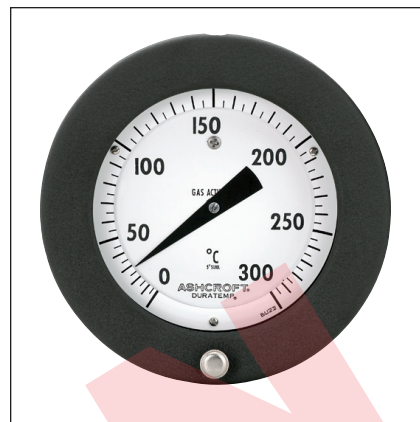


- **Exclusive movementless design resists shock and vibration – no gears to wear or misalign resulting in increased instrument life**
- **Gas-operated molecular sieve**
- **No elevation error**
- **Mercury free**
- **One bulb size for all ranges**
- **±1% full-span accuracy**
- **Maxivision® dial**
- **Readily available – two to three weeks delivery**
- **Limited five-year warranty**

An aluminum case with a durable epoxy finish. Designed specifically for panel mounting. A hinged ring permits glass replacement and pointer adjustment. Available in 4½", 6" and 8½" sizes.



SELECTION TABLE

600A — 02		C12		B01		A1		L07		AK	
Table 1		Table 2		Table 3		Table 4		Table 5		Table 6	
CASE STYLE		CASE SIZE		BULB STYLES*		ARMOR STYLE		LINE LENGTH		RANGES	
CODE	DESCRIPTION	CODE	SIZE	MOUNTING		CODE	DESCRIPTION	CODE	LINE LENGTH	CODE	SINGLE RANGES
				SURFACE	FLUSH						
02	ALUMINUM HINGED RING	C12	4½"		✓			L01	5'	AB	–320/200°F
		C27	6"		✓					AE	–100/100°F
		C35	8½"		✓					AG	–40/180°F
600A							A1	Stainless Steel Spring		AK	20/240°F
										AL	50/300°F
										AN	50/550°F
										AR	50/750°F
										AT	400/1200°F
										AY	–200/100°C
										BL	–80/40°C
										BN	–40/80°C
										BS	0/120°C
										BT	10/150°C
										BU	0/300°C
										BW	0/400°C
										BJ	200/650°C
										DUAL RANGES	
										CE	20/240°F
											0/120°C
										CF	50/550°F
											0/300°C
										DR	50/300°F
											10/150°C
										DT	–40/180°F
											–40/80°C

*Minimum recommended insertion length ("u" dimension) in liquids is 4 inches and in gases is 6 inches for standard 3/8 x 3" bulb

TO ORDER THIS DURATEMP 600A-02 THERMOMETER:

Select:

	600A	02	C12	B01	A1	L07	AK	XNH
1. Case Style: Aluminum/Hinged Ring	Table 1							
2. Case Size & Mounting: 4½" Flush, Rear	Table 2							
3. Bulb Style: 12" Bendable Extension with Union Connection	Table 3							
4. Armor Style: Stainless Steel Spring	Table 4							
5. Line Length: 20 feet	Table 5							
6. Temperature Range: 20/240°F	Table 6							
7. Options: Stainless Steel Tag	(See Page 210)							

Consult factory for guidance in product selection
 Phone (203) 385-0217, Fax (203) 385-0602 or
 visit our web site at www.ashcroft.com