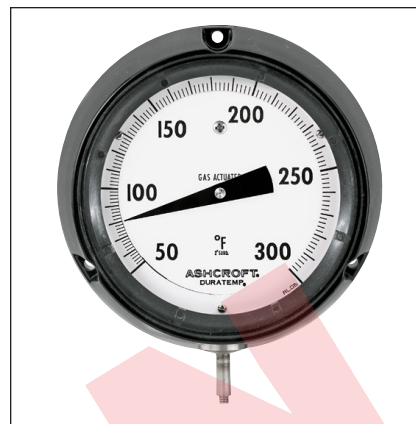


- **Exclusive movementless design resists shock and vibration – no gears to wear or misalign resulting in increased instrument life**
- **Gas-operated molecular sieve**
- **No elevation error**
- **Mercury free**
- **One bulb size for all ranges**
- **±1% full-span accuracy**
- **Maxivision® dial**
- **Readily available – two to three weeks delivery**
- **Limited five-year warranty**

This hermetically sealed case is designed for applications where extreme moisture or dust is present. Available in a 4½" solid front phenolic turret case, lower connection.


SELECTION TABLE

600H — 45		C60		B01		A1		L07		AK											
Table 1		Table 2						Table 3		Table 4		Table 5		Table 6							
CASE STYLE		CASE SIZE		MOUNTING				BULB STYLES*		ARMOR STYLE		LINE LENGTH		RANGES							
CODE	DESCRIPTION	CODE	SIZE	MOUNTING		CONNECTION		CODE	DESCRIPTION	CODE	DESCRIPTION	CODE	LINE LENGTH	CODE	SINGLE RANGES						
45	PHENOLIC HERMETICALLY SEALED	C60	4 1/2	SURFACE	FLUSH	LOWER	REAR	B01	12" Bendable extension with ½ NPT union connection	A1	Stainless Steel Spring	L01	5´	AB	–320/200°F						
								B03	Plain bulb with rigid extension, no union					AE	–100/100°F						
								B08	Plain bulb with rigid extension, ½ NPT union on armor									AG	–40/180°F		
																		AK	20/240°F		
																		AL	50/300°F		
																		AN	50/550°F		
								B17	18" Bendable extension with ½ NPT union connection											AR	50/750°F
																				AT	400/1200°F
																				AY	–200/100°C
																				BL	–80/40°C
								B18	24" Bendable extension with ½ NPT union connection												BN
BS	0/120°C																				
BT	10/150°C																				
BU	0/300°C																				
*Minimum recommended insertion length ("u" dimension) in liquids is 4 inches and in gases is 6 inches for standard ⅜ x 3" bulb														BW	0/400°C						
														BJ	200/650°C						
														DUAL RANGES							
														CE	20/240°F 0/120°C						
														CF	50/550°F 0/300°C						
														DR	50/300°F 10/150°C						
														DT	–40/180°F –40/80°C						

TO ORDER THIS DURATEMP 600H-45 THERMOMETER:
Select:

- Case Style: Phenolic Hermetically Sealed _____ Table 1 _____
- Case Size & Mounting: 4½" Surface, Lower _____ Table 2 _____
- Bulb Style: 12" Bendable Extension with Union Connection _____ Table 3 _____
- Armor Style: Stainless Steel Spring _____ Table 4 _____
- Line Length: 20 feet _____ Table 5 _____
- Temperature Range: 20/240°F _____ Table 6 _____
- Options: Stainless Steel Tag _____ (See Page 210) _____

Consult factory for guidance in product selection
 Phone (203) 385-0217, Fax (203) 385-0602 or
 visit our web site at www.ashcroft.com